

ZK-LPR Car ID

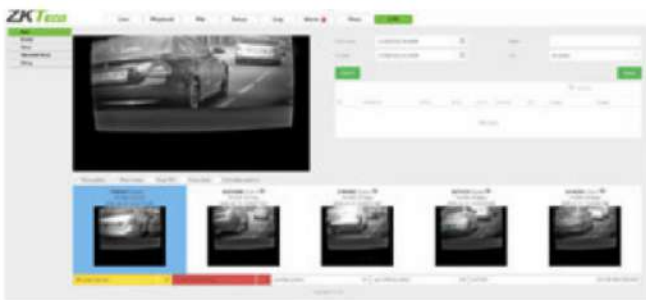
License Plate Recognition Cameras



ZK-LPR Car ID is based on BL-852Q38A-LP and DL-852Q28B-LP, ZKTeco's high-performance cameras with embedded License Plate Recognition application.

The license plate recognition algorithm is executed inside the camera avoiding the use of computers in access control, tolling and weighing scenarios. The License Plate Recognition engine can identify license plates from over 80 countries around the world.

ZK-LPR Car ID is next step in ZKTeco's access control system technology for an efficient and simple vehicle access management, delivering, faster & easier set-up and allowing customers to achieve high performance with lower installation, maintenance and off-site programming costs.

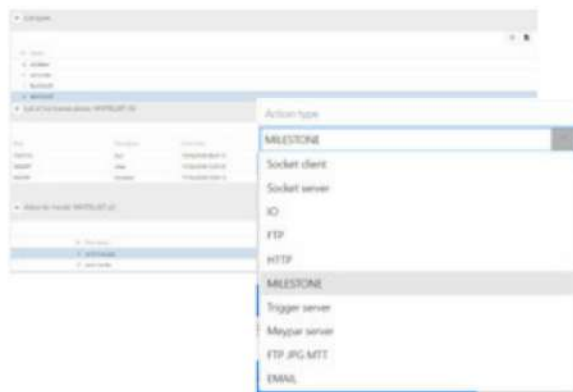


Live View

ZK-LPR Car ID allows real-time monitoring of alphanumeric license plates captured by the camera, issuing reports with plate recognition data. Optimized memory storage available.

Monitor and review license plate recognition history data

The licences plate recognition history data can be stored for retrieval and review. Different filters can be enabled for this purpose, such as: Date, time, country of origin.



Configure lists and linkage actions

The system allows to create an unlimited number of event lists and assign different actions like, for example, opening/closing barriers sending a signal via HTTP or simple integrations with 3rd party companies like Milestone or Lenel. All linkages can be activated by limited time periods and lists can be exported or imported from other devices.

LPR Configuration

The system supports plate detection from different regions and countries. Country license plate detection is configurable as well as the performance of the camera according to the environment.



Specifications

Camera					
	BL-852Q38A-LP	DL-852Q28B-LP 1/2.8"		BL-852Q38A-LP	DL-852Q28B-LP
Image Sensor	Sony STAVIS CMOS		IR LED No.	2 (Smart IR)	
Effective Pixels	1920* 1080		IR Distance	50m	
Min. Illumination	Color: 0.001Lux@F1.7 (AGC ON)		S/N Ratio	> 52dB	
Flash	512 Mb	1Gb / 4Gb			
Lens					
	BL-852Q38A-LP	DL-852Q28B-LP		BL-852Q38A-LP	DL-852Q28B-LP
Lens Type	Motorized		Aper ture	F1.7 ~ F3.0	
Mount Type	Board-in		FOV	38° ~ 107°	
Focal Length	3.35mm ~ 10.05mm		Optical Zoom	3X	
Video					
	BL-852Q38A-LP	DL-852Q28B-LP		BL-852Q38A-LP	DL-852Q28B-LP
Compression	H.265+/H.265/H.264		WDR	TWDR	
Resolution	1080P(1920*1080)/1.3MP(1280*960)/720P(1280*720) Q720P(640*360)/CIF(352*288)		Day/Night	Support	
Bitrate Control	CBR/VBR		White Balance	Support	
Bitrate	H.265+:1536Kbps-7Mbps H.265:1536Kbps-7Mbps H.264:1792Kbps-9Mbps		Defog	Support	
Multi-Streaming	Main Stream:1080P@25fps		Noise Reduction	3D DNR	2D/3D DNR
	Sub Stream: Q720P@25fps		Mirror/Flip	Support	
	N/A		Corridor Mode	Support	
Motion Detection	Support		HLC	Support	
Digital Zoom	Support		BLC	N/A	Support
Audio Compression	G7.11u		ROI	4areas	
Privacy Mask	5 areas		Anti-flicker	Support	
Network					
	BL-852Q38A-LP	DL-852Q28B-LP		BL-852Q38A-LP	DL-852Q28B-LP
Protocol	TCP/IP, UDP, HTTP, DHCP, RTSP, DDNS, NTP, PPPoE, UPnP, SMTP		Management Software(VMS)	AntarVis 2.0, ZKBioSecurity IVS, ZKBioAccess	
Interoperability	ONVIF, Profile S SDK, API		Operation System	IVS Windows	
Max. Online Users	5		Mobile APP	AntarView Pro	
Web Browser	IE/Firefox/Chrome/Safari		P2P Cloud Service	Support	
Interface					
	BL-852Q38A-LP	DL-852Q28B-LP		BL-852Q38A-LP	DL-852Q28B-LP
Ethernet	1 RJ-45 port (10/100Mbps)		Reset Button	Support	
Audio I/O	1 in / 1 out		Micro-SD	64GB (card included)Support (Max 128GB)	
Alarm I/O	2 in / 1 out		Slot ANR	Support	
RS485	Support		USB	N/A	
General					
	BL-852Q38A-LP	DL-852Q28B-LP		BL-852Q38A-LP	DL-852Q28B-LP
Power Supply	PoE (IEEE802.3af), DC 12V±10%		Working Humidity	10% ~ 90%	
Power Consumption	< 3W		Working Temperature	-30°C ~ +60 °C	
Ingress Protection	IP 67		Net Weight	0.50 kg	
Dimensions	247(L)*85(W)*76(H)mmΦ102*93.2 mm		Gross Weight	0.64 kg0.70kg	

